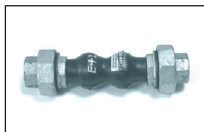


SIFONAME E MINUTERIE

FIRES

I prodotti nell'edilizia

Giunto Antivibrante



Filettato - con bocchettoni

K0244005	d. 3/4
K0244006	d. 1"
K0244007	d. 1.1/4
K0244008	d. 1.1/2
K0244009	d. 2"

Giunto Antivibrante



Flangiato

K0245107	d. 40
K0245108	d. 50
K0245109	d. 65
K0245110	d. 80
K0245111	d. 100
K0245112	d. 125
K0245113	d. 150

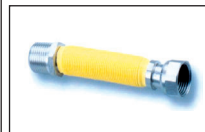
Giunto Antivibrante



Acciaio Inox

K0246040	d. 40
K0246050	d. 50
K0246065	d. 65
K0246080	d. 80

Flessibili Inox-Gas m/f



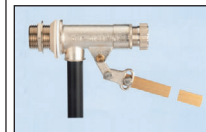
Guaina gialla d. 1/2

K02470112	mm.120-210
K02470214	mm.240-410

Guaina gialla d. 3/4

K02471112	mm.120-210
K02471214	mm.240-410

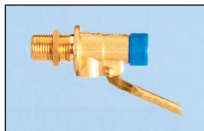
Galleggiante Ottone



alta pressione

K0254105	d. 3/4
K0254106	d. 1"
K0254107	d. 1.1/4
K0254108	d. 1.1/2
K0254109	d. 2"
K0254110	d. 2.1/2

Galleggiante Asta Ottone



giallo - silenzioso

K0254004	d. 1/2
K0254015	d. 3/4

Galleggiante Asta Ottone



normale - asta piatta

K0254005	d. 3/4
K0254006	d. 1"

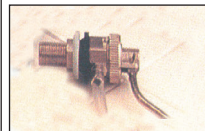
Galleggiante silenzioso



extra per cassetta WC

K0254203	d. 3/8
K0254204	d. 1/2

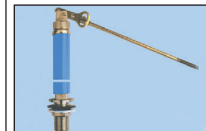
Galleggiante Catis



per cassetta WC

K0254303	d. 3/8
K0254304	d. 1/2

Galleggiante Siphonic



per cassetta WC

K0254503	d. 3/8
K0254504	d. 1/2

Sfera per galleggiante



PVC d. 90

K0255003	d. 3/8-1/2
----------	------------

Sfera per galleggiante



PVC con Nottolino

K0255005	d. 120
----------	--------

Sfera per galleggiante



PVC scorrevole

K0255006	d. 120
----------	--------

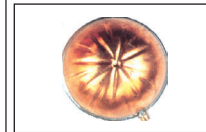
Sfera per galleggiante



PVC scorrevole

K0255007	d. 150
K0255008	d. 180
K0255009	d. 220

Sfera per galleggiante



Tonda in Rame

K0255108	d. 85-90
----------	----------

Rosone Foro Esagonale

Fig. 460



K0281094	d. 1/2
----------	--------

Rosone Ottone cromato

Fig. 405



K0281093	d. 3/8
K0281104	d. 1/2

Rosone Ovale con alette

Fig.430



K0281107	d. 30
----------	-------

Rosone Ovale Pesante

Fig. 435



K0281207	d. 30
----------	-------

Rosone Gigante

Fig. 426



K0281690	Tipo Coes
----------	-----------

Rosone per Canna

Fig. 415



K0281306	d. 26
K0281307	d. 30
K0281407	d. 40

Rosone per Canna

Fig. 420



K0281507	d. 40
----------	-------

Rosone Gigante per Canna

Fig. 425



Diametro 100 mm.

K0281610	foro 30
K0281611	foro 32

Tappo Gomma c/Catena



K0295031	d. 31
K0295040	d. 40
K0295047	d. 47

Tappo Gomma da 52



con -o- senza catena	
K0295050	d. 52

Pull con Catena



K0295090	
----------	--